

An aerial photograph of a tea plantation. The tea bushes are arranged in neat, parallel rows, creating a grid-like pattern across the landscape. A dirt path winds through the plantation, starting from the top right and curving downwards. The overall scene is lush and green, with the rows of tea bushes dominating the view.

New structured spare parts list
Repair kits

Optimised, quick access – using QR Code and exploded illustrations you can quickly identify the component you are looking for.

User-friendly structure – MyBPW platform allows you to search for parts and export them to an excel file.

Sustainable – Parts for a running gear are also available for a specific side, therefore it is not necessary to buy the whole group.

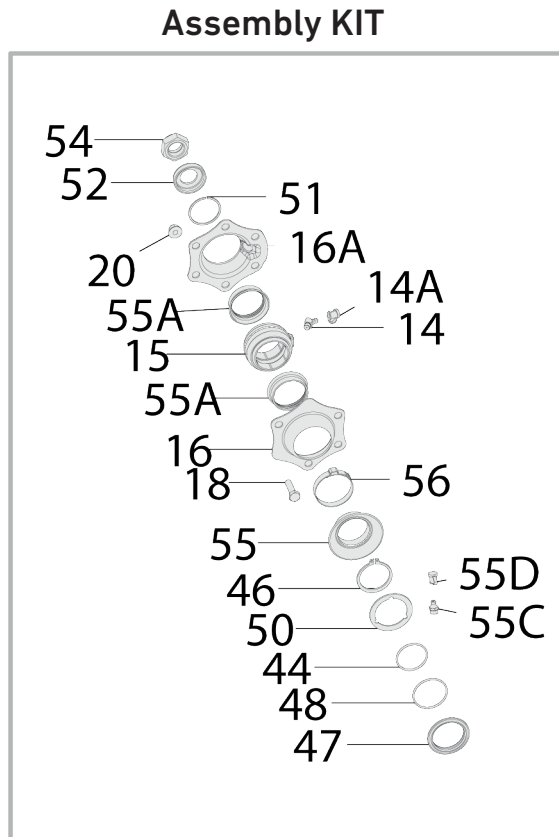
Cost effective – Component groups have been established in line with the proposed maintenance plan.

Optimised – Component groups have been arranged by functions. Some components are still only available in a group to ensure optimised functioning.

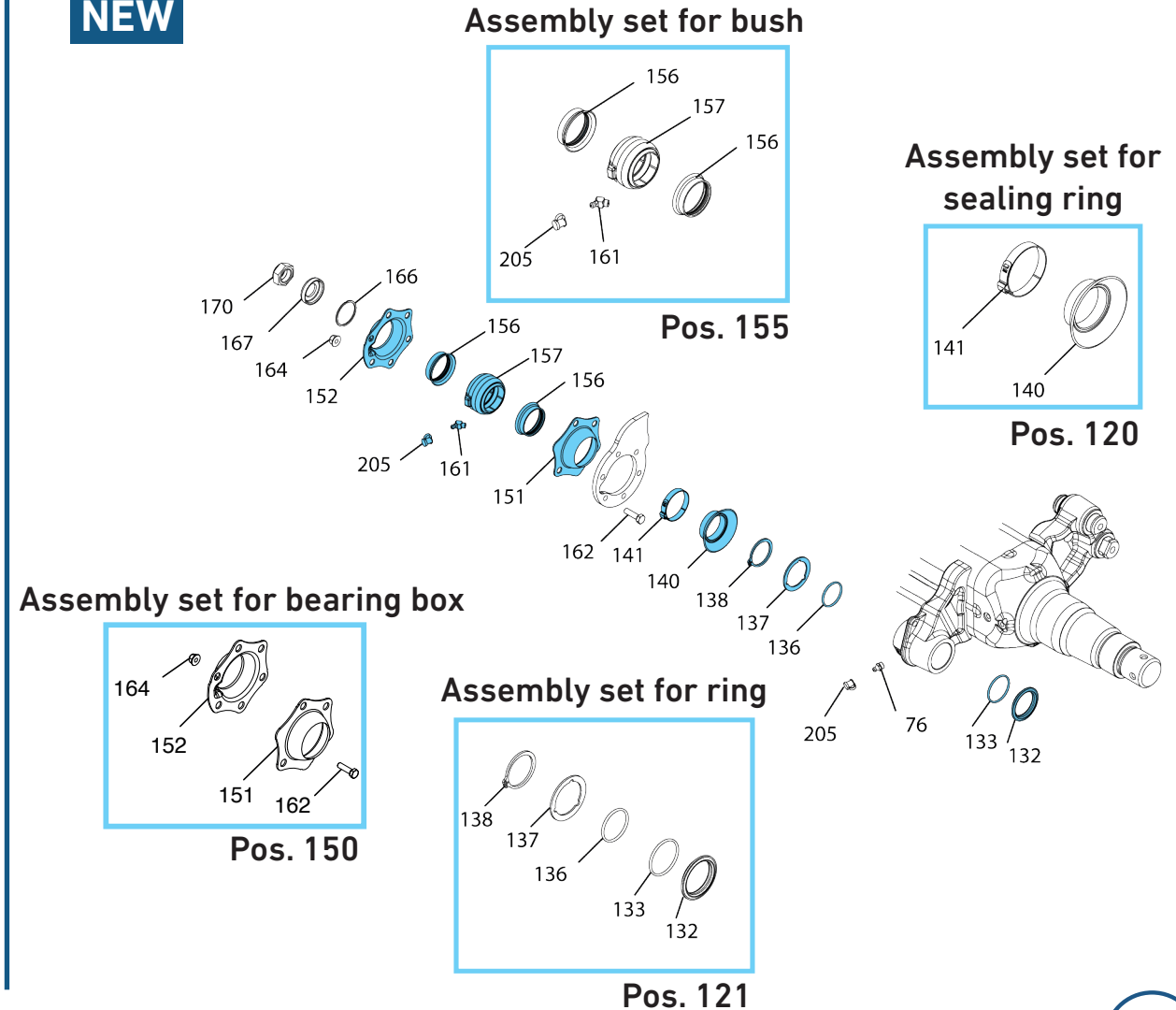
Safety – Supporting parts for main components are also provided e.g. when replacing the bush, it is necessary to replace the sealing rings.

01 - Brake camshaft assembly sets

PREVIOUS



NEW

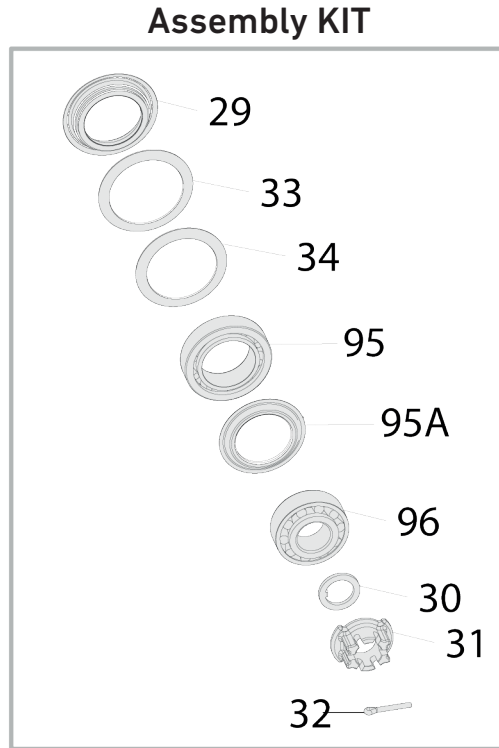


01 - Brake camshaft assembly sets

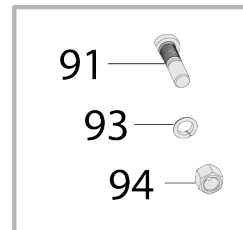
Position	Assembly set	GS 11000	GS 12000	GS 14000
120		09.703.10.09.0	09.703.10.09.0	09.703.10.09.0
121		09.703.11.50.0	09.703.11.50.0	09.703.11.50.0
150		09.703.10.03.0	09.703.10.03.0	09.703.10.03.0
155		09.703.10.10.0	09.703.10.10.0	09.703.10.10.0

02 - Roller bearings assembly

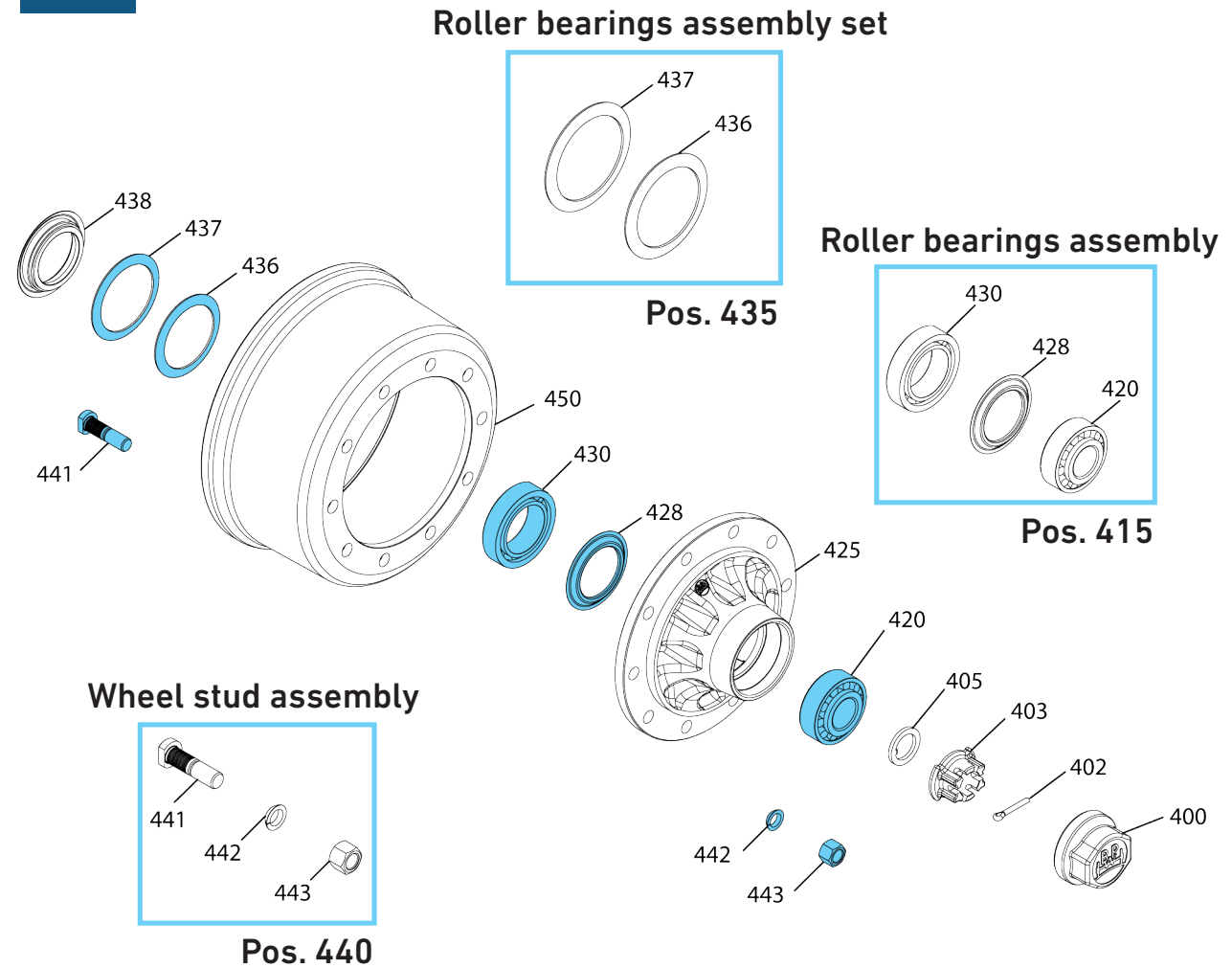
PREVIOUS



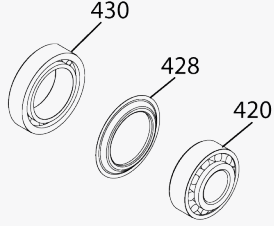
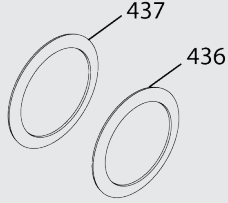
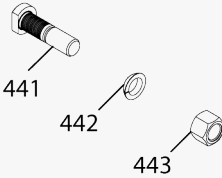
Wheel stud assembly



NEW

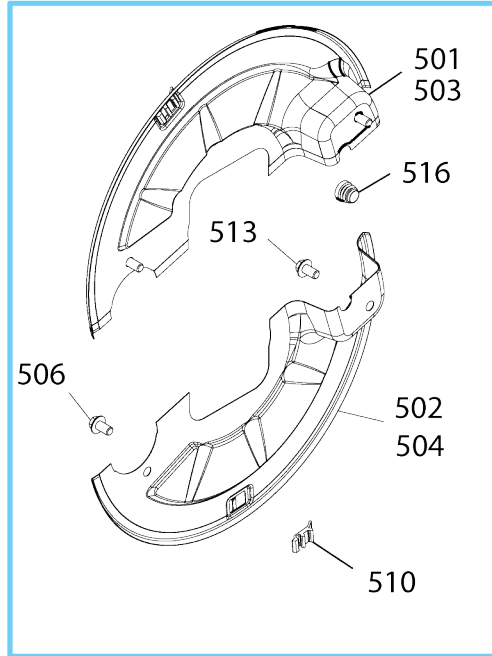


02 - Roller bearings assembly

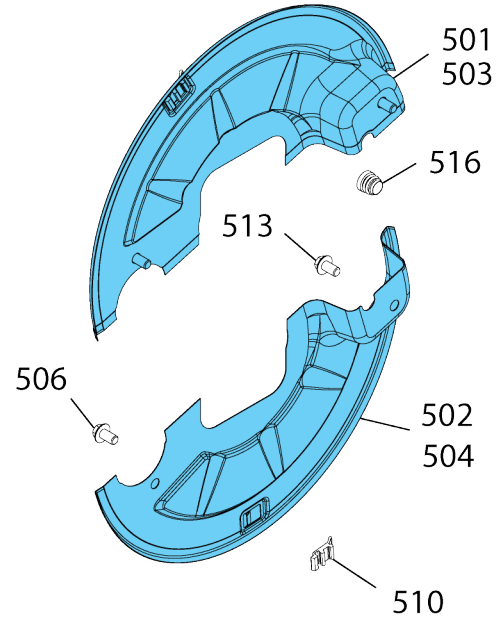
Position	Assembly set	GS 11000	GS 12000	GS 14000
415		09.703.10.02.0	09.703.10.46.0	09.703.10.24.0
435		09.703.10.01.0	09.703.10.45.0	09.703.10.23.0
440		09.803.80.11-15.0	09.803.80.11-15.0	09.803.80.11-15.0

03 - New spare parts groups

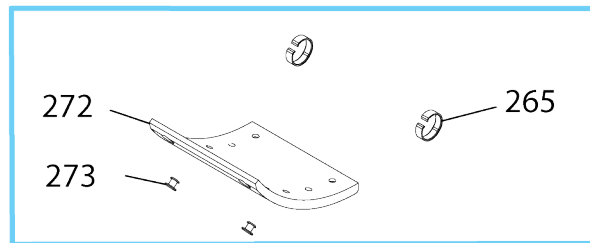
Dust cover assembly set



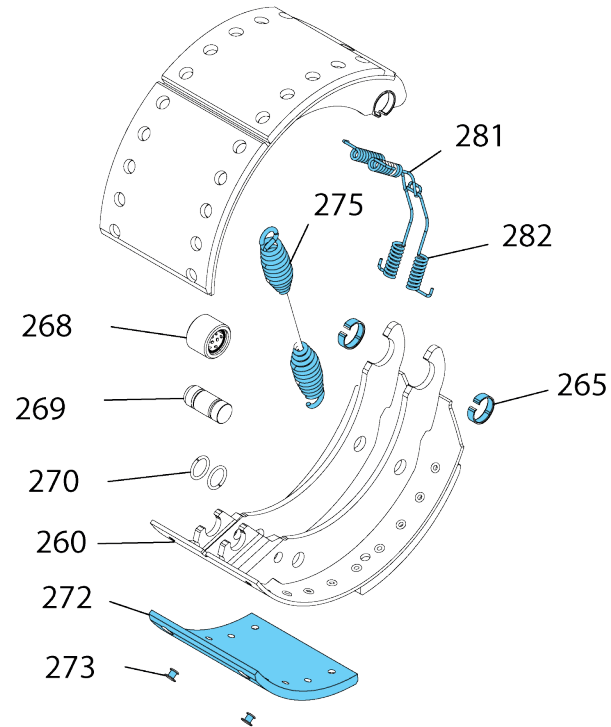
Pos. 495-496



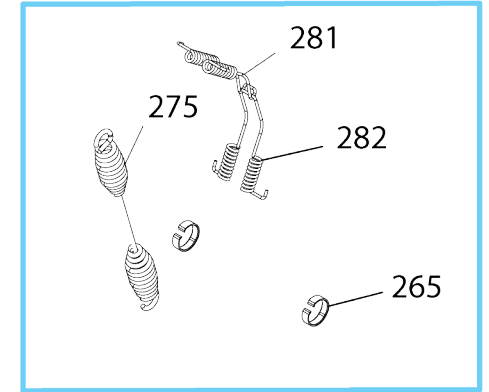
Brake lining assembly



Pos. 252

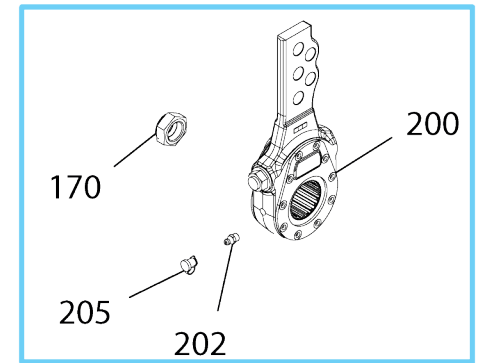


Return spring assembly set



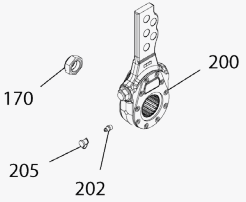
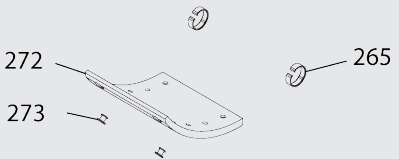
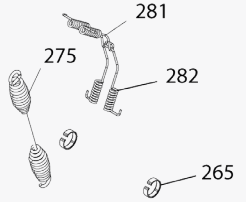
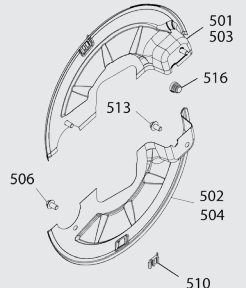
Pos. 253

Slack adjuster assembly



Pos. 195

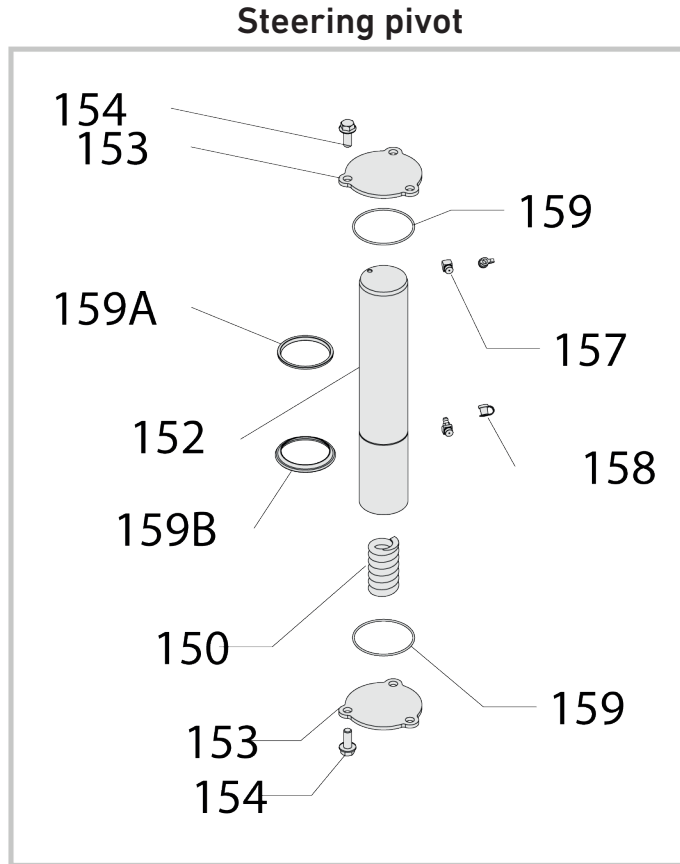
03 - New spare parts groups

Position	Assembly set	GS 11000	GS 12000	GS 14000
195		GSK - 09.703.10.11.0 AGS - 09.703.10.21.0	GSK - 09.703.10.17.0 AGS - 09.703.10.30.0	GSK - 09.703.10.11.0 AGS - 09.703.10.70.0
252		FL 4112 - 09.703.10.05.0 FL 4118 - 09.703.10.06.0	FL 4112 - 09.703.10.05.0 FL 4118 - 09.703.10.06.0	FL 4118 - 09.703.10.06.0
253		09.703.10.16.0	09.703.10.16.0	09.703.10.16.0
495-496		09.703.10.12-13.0	09.703.10.27-28.0	09.703.10.27-28.0

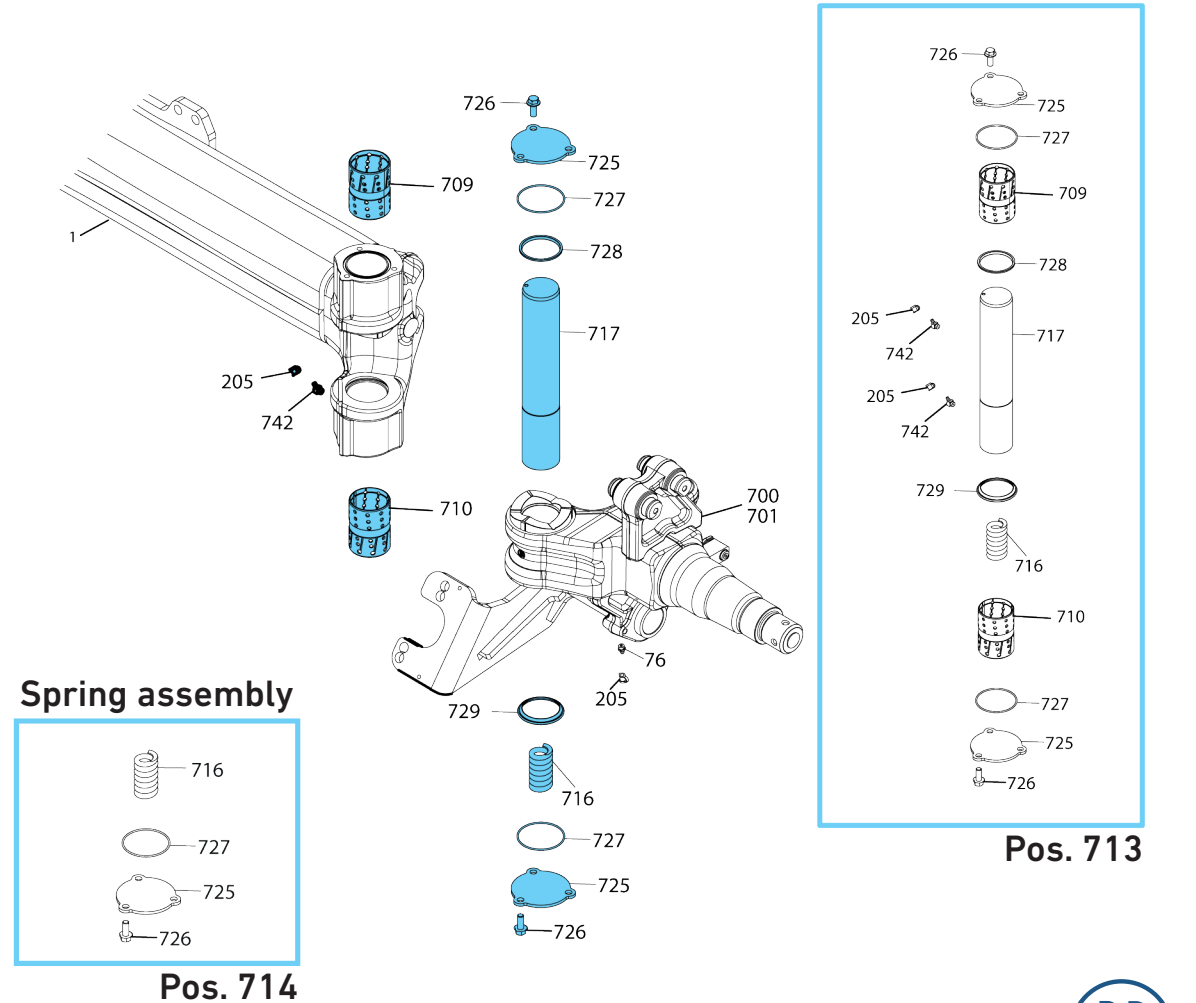
The above groups vary by axles.

04 - Steering pivot assembly

PREVIOUS



NEW



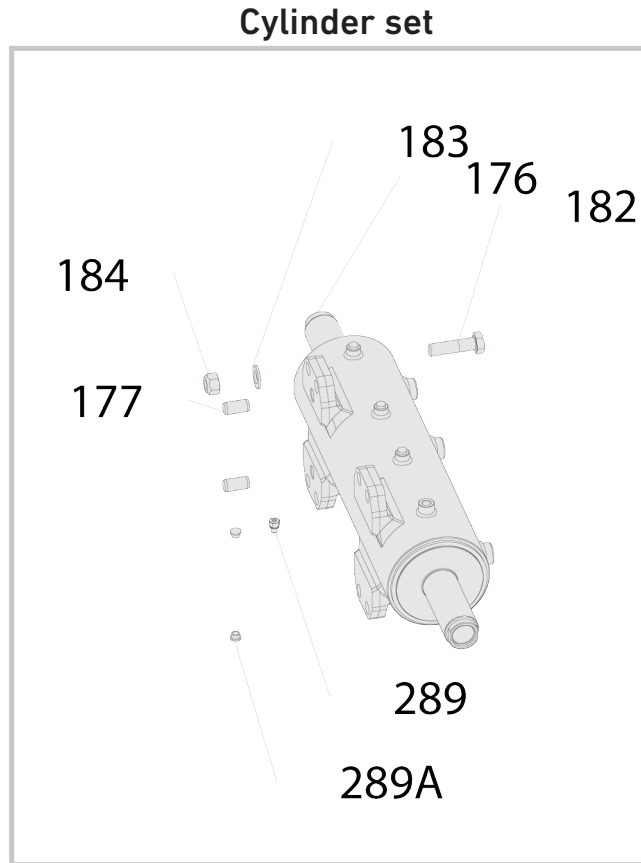
04 - Steering pivot assembly

Position	Assembly set	AGT	GS(H)LL 12010	GS(H)LL 14010	GSL	GSLA
713		09.703.11.18.0	09.703.14.90.0	09.703.14.96.0	09.703.14.87.0	09.703.11.40.0
714		09.703.11.14.0	09.703.14.89.0	09.703.14.89.0	09.703.14.88.0	09.703.11.38.0

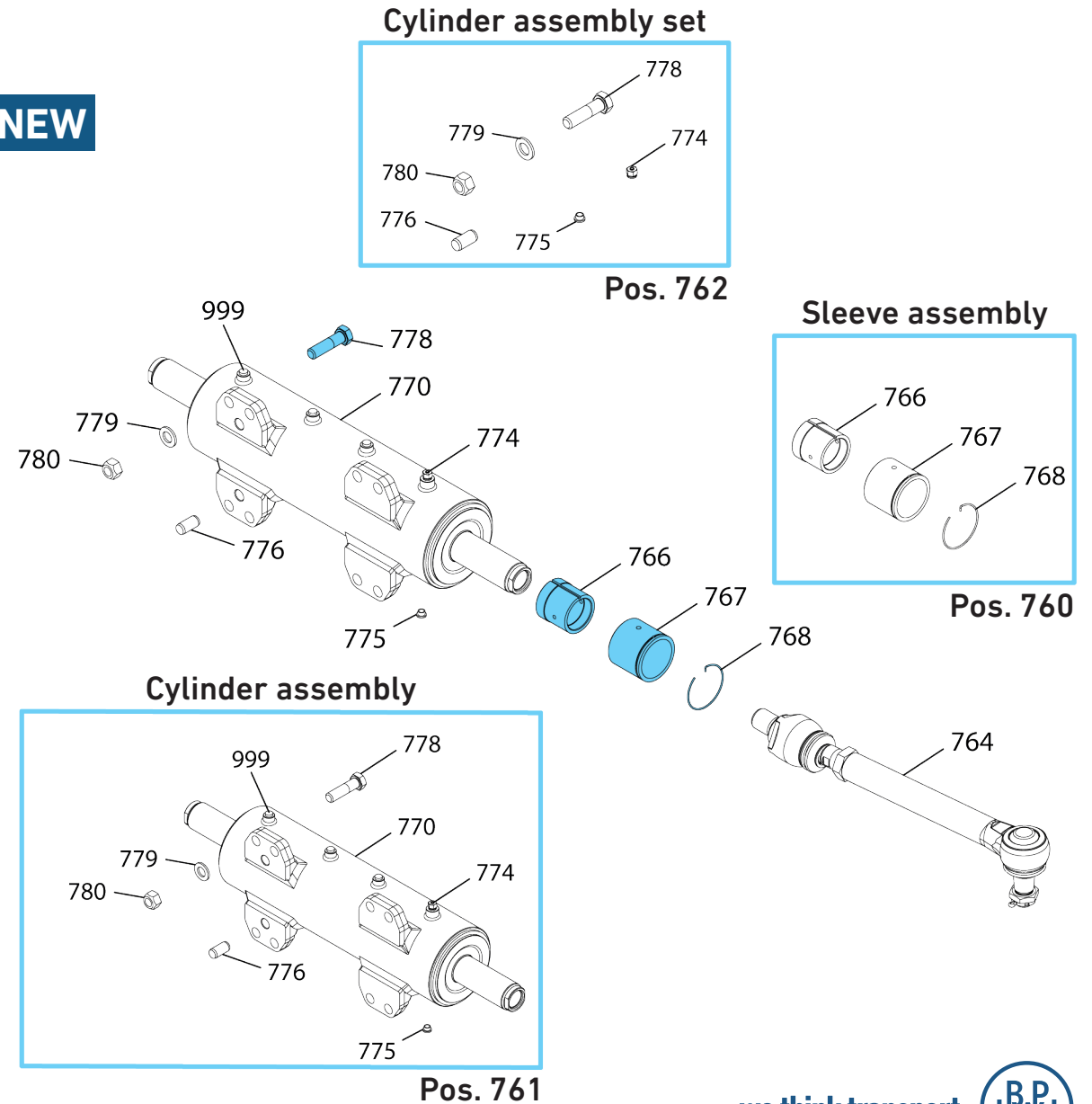
The above groups vary by axles.

05 - Cylinder assembly set

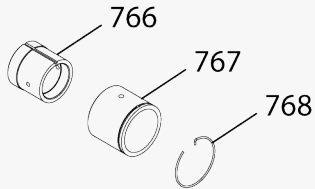
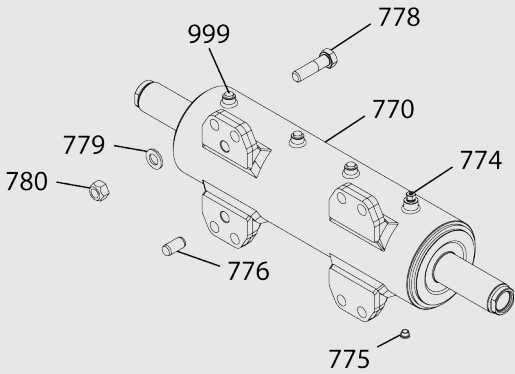
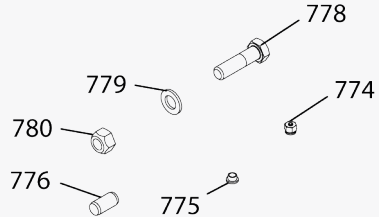
PREVIOUS



NEW



05 - Cylinder assembly set

Position	Assembly set	AGT	GS(H)LL 12010	GS(H)LL 14010	GSL	GSLA
760		09.803.42.66.0	-	-	-	-
761		09.703.11.15.0	09.703.15.00.0	09.703.14.97.0	09.703.11.19.0	09.703.11.15.0
762		09.803.42.73.0	09.803.93.84.0	09.803.42.67.0	09.803.42.67.0	09.803.42.73.0

The above groups vary by axles.



THANK YOU
for Your attention!

we think transport

